

Product Datasheet

ECM1 Antibody



Catalog No: CY9984

Reactivity: Human Rat

Isotype: Rabbit IgG

Applications: WB IHC ICC/IF IP FC

www.abways.com

Information

UniProt ID: Q16610

All Names: Ecm1; URBWD;

Form: Liquid

Storage instructions: Store at +4° C short term. Store at -20° C long term. Avoid freeze / thaw cycle.

Storage buffer: pH 7.4, 150mM NaCl, 0.02% sodium azide and 50% glycerol.

Purity: Affinity-chromatography

Immunogen: A synthesized peptide

Molecular Wt.: 70kDa

Application

WB 1:500~1:2000

IHC 1:50~1:200

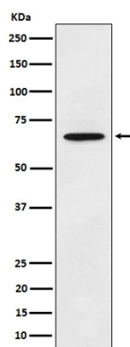
ICC/IF 1:50~1:200

IP 1:50

FC 1:50

Background

Involved in endochondral bone formation as negative regulator of bone mineralization. Stimulates the proliferation of endothelial cells and promotes angiogenesis. Inhibits MMP9 proteolytic activity.



Western blot analysis of ECM1 expression in A375 cell lysate.

For Research Use Only. Not For Use In Diagnostic Procedures.

www.abways.com