

Product Datasheet

ABI2 Antibody



Catalog No: CY9956

Reactivity: Human Mouse Rat

Isotype: Rabbit IgG

Applications: WB IHC ICC/IF

www.abways.com

Information

UniProt ID: Q9NYB9

All Names: Abelson interactor 2; ABI2; ABI2B; Abl binding protein 3; AbIBP3; ArgBP1; ARGBPIA; ArgBPIB; SSH3BP2;

Form: Liquid

Storage instructions: Store at +4° C short term. Store at -20° C long term. Avoid freeze / thaw cycle.

Storage buffer: pH 7.4, 150mM NaCl, 0.02% sodium azide and 50% glycerol.

Purity: Affinity-chromatography

Immunogen: A synthesized peptide

Molecular Wt.: 75kDa

Application

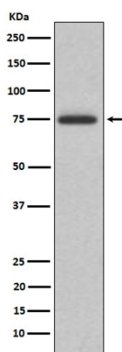
WB 1:500~1:2000

IHC 1:50~1:200

ICC/IF 1:50~1:200

Background

May act in regulation of cell growth and transformation by interacting with nonreceptor tyrosine kinases ABL1 and/or ABL2. Part of the WAVE complex that regulates lamellipodia formation. The WAVE complex regulates actin filament reorganization via its interaction with the Arp2/3 complex. Regulates ABL1/c-Abl-mediated phosphorylation of MENA.



Western blot analysis of ABI2 expression in K562 cell lysate.

For Research Use Only. Not For Use In Diagnostic Procedures.

www.abways.com