

Product Datasheet

EDG3 Antibody



Catalog No: CY9946

Reactivity: Human

Isotype: Rabbit IgG

Applications: WB IHC ICC/IF

www.abways.com

Information

UniProt ID: Q99500

All Names: EDG3; LPB3; S1P receptor 3; S1P3; S1pr3;

Form: Liquid

Storage instructions: Store at +4° C short term. Store at -20° C long term. Avoid freeze / thaw cycle.

Storage buffer: pH 7.4, 150mM NaCl, 0.02% sodium azide and 50% glycerol.

Purity: Affinity-chromatography

Immunogen: A synthesized peptide

Molecular Wt.: 42kDa

Application

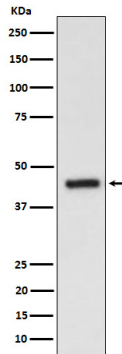
WB 1:500~1:2000

IHC 1:50~1:200

ICC/IF 1:50~1:200

Background

Receptor for the lysosphingolipid sphingosine 1-phosphate (S1P). S1P is a bioactive lysophospholipid that elicits diverse physiological effect on most types of cells and tissues. When expressed in rat HTC4 hepatoma cells, is capable of mediating S1P-induced cell proliferation and suppression of apoptosis.



Western blot analysis of EDG3 expression in HepG2 cell lysate.

For Research Use Only. Not For Use In Diagnostic Procedures.

www.abways.com