

Product Datasheet

KDM1 / LSD1 Antibody



Catalog No: CY9932

Reactivity: Human Mouse Rat

Isotype: Rabbit IgG

Applications: WB FC

www.abways.com

Information

UniProt ID: O60341

All Names: AOF2; CPRF; EC1; KDM1; Kdm1a; LSD1;

Form: Liquid

Storage instructions: Store at +4° C short term. Store at -20° C long term. Avoid freeze / thaw cycle.

Storage buffer: pH 7.4, 150mM NaCl, 0.02% sodium azide and 50% glycerol.

Purity: Affinity-chromatography

Immunogen: A synthesized peptide

Molecular Wt.: 110kDa

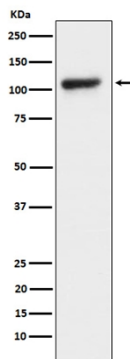
Application

WB 1:500~1:2000

FC 1:50

Background

Histone demethylase that demethylates both 'Lys-4' (H3K4me) and 'Lys-9' (H3K9me) of histone H3, thereby acting as a coactivator or a corepressor, depending on the context.



Western blot analysis of KDM1 / LSD1 expression in HeLa cell lysate.

For Research Use Only. Not For Use In Diagnostic Procedures.

www.abways.com