

Product Datasheet

TIMM50 Antibody



Catalog No: CY9728

Reactivity: Human Mouse

Isotype: Rabbit IgG

Applications: WB IHC

www.abways.com

Information

UniProt ID: Q3ZCQ8

All Names: TIM50; TIM50L; TIMM50;

Form: Liquid

Storage instructions: Store at +4° C short term. Store at -20° C long term. Avoid freeze / thaw cycle.

Storage buffer: pH 7.4, 150mM NaCl, 0.02% sodium azide and 50% glycerol.

Purity: Affinity-chromatography

Immunogen: A synthesized peptide

Molecular Wt.: 36kDa

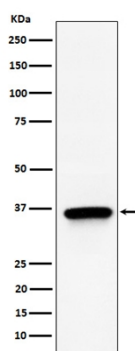
Application

WB 1:500~1:2000

IHC 1:50~1:200

Background

Essential component of the TIM23 complex, a complex that mediates the translocation of transit peptide-containing proteins across the mitochondrial inner membrane. Has some phosphatase activity in vitro; however such activity may not be relevant in vivo.



Western blot analysis of TIMM50 expression in 293T cell lysate.

For Research Use Only. Not For Use In Diagnostic Procedures.

www.abways.com