

## Product Datasheet

# Lamin A/C Antibody



Catalog No: CY9727

Reactivity: Human Mouse Rat

Isotype: Rabbit IgG

Applications: WB IHC ICC/IF FC

[www.abways.com](http://www.abways.com)

### Information

**UniProt ID:** P02545

**All Names:** CDCC1; CDDC; CMD1A; CMT2B1; EMD2; FPL; FPLD; FPLD2; HGPS; IDC; Lamin A; Lamin A/C; Lamin C; LDP1; LFP; LGMD1B; LMN1; LMNA; LMNC; LMNL1; PRO1;

**Form:** Liquid

**Storage instructions:** Store at +4° C short term. Store at -20° C long term. Avoid freeze / thaw cycle.

**Storage buffer:** pH 7.4, 150mM NaCl, 0.02% sodium azide and 50% glycerol.

**Purity:** Affinity-chromatography

**Immunogen:** A synthesized peptide

**Molecular Wt.:** 28/40-74KDa

### Application

WB 1:500~1:2000

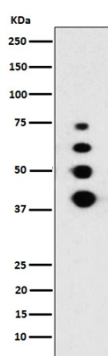
IHC 1:50~1:200

ICC/IF 1:50~1:200

FC 1:50

### Background

Lamins are components of the nuclear lamina, a fibrous layer on the nucleoplasmic side of the inner nuclear membrane, which is thought to provide a framework for the nuclear envelope and may also interact with chromatin.



Western blot analysis of Lamin A/C expression in HeLa cell treated with staurosporine.

**For Research Use Only. Not For Use In Diagnostic Procedures.**

[www.abways.com](http://www.abways.com)