

Product Datasheet

PSMA3 Antibody



Catalog No: CY9726

Reactivity: Human Mouse Rat

Isotype: Rabbit IgG

Applications: WB IHC ICC/IF IP

www.abways.com

Information

UniProt ID: P25788

All Names: HC8; Proteasome component C8; PSC8; psmA3;

Form: Liquid

Storage instructions: Store at +4° C short term. Store at -20° C long term. Avoid freeze / thaw cycle.

Storage buffer: pH 7.4, 150mM NaCl, 0.02% sodium azide and 50% glycerol.

Purity: Affinity-chromatography

Immunogen: A synthesized peptide

Molecular Wt.: 28kDa

Application

WB 1:500~1:2000

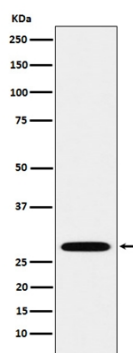
IHC 1:50~1:200

ICC/IF 1:50~1:200

IP 1:50

Background

The proteasome is a multicatalytic proteinase complex which is characterized by its ability to cleave peptides with Arg, Phe, Tyr, Leu, and Glu adjacent to the leaving group at neutral or slightly basic pH.



Western blot analysis of PSMA3 expression in A549 cell lysate.

For Research Use Only. Not For Use In Diagnostic Procedures.

www.abways.com