

Product Datasheet

Timeless Antibody



Catalog No: CY9706

Reactivity: Human

Isotype: Rabbit IgG

Applications: WB IHC ICC/IF

www.abways.com

Information

UniProt ID: Q9UNS1

All Names: hTIM; TIM; TIM1; Timeless; timeless circadian clock 1; TIMELESS1;

Form: Liquid

Storage instructions: Store at +4° C short term. Store at -20° C long term. Avoid freeze / thaw cycle.

Storage buffer: pH 7.4, 150mM NaCl, 0.02% sodium azide and 50% glycerol.

Purity: Affinity-chromatography

Immunogen: A synthesized peptide

Molecular Wt.: 150kDa

Application

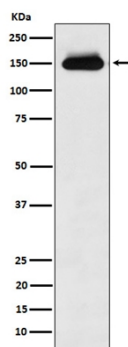
WB 1:500~1:2000

IHC 1:50~1:200

ICC/IF 1:50~1:200

Background

Required for normal progression of S-phase. Involved in the circadian rhythm autoregulatory loop. Negatively regulates CLOCK-NPAS2/BMAL1-induced transactivation of PER1 possibly via translocation of PER1 into the nucleus.



Western blot analysis of Timeless expression in HeLa cell lysate.

For Research Use Only. Not For Use In Diagnostic Procedures.

www.abways.com