

## Product Datasheet

# CD239 Antibody



Catalog No: CY9674

Reactivity: Human Mouse Rat

Isotype: Rabbit IgG

Applications: WB IHC IP FC

[www.abways.com](http://www.abways.com)

### Information

**UniProt ID:** P50895

**All Names:** Bcam; CD239; Lutheran; MSK19;

**Form:** Liquid

**Storage instructions:** Store at +4° C short term. Store at -20° C long term. Avoid freeze / thaw cycle.

**Storage buffer:** pH 7.4, 150mM NaCl, 0.02% sodium azide and 50% glycerol.

**Purity:** Affinity-chromatography

**Immunogen:** A synthesized peptide

**Molecular Wt.:** 85kDa

### Application

WB 1:500~1:2000

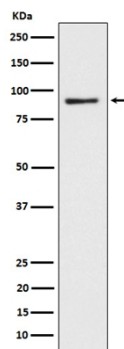
IHC 1:50~1:200

IP 1:50

FC 1:50

### Background

Laminin alpha-5 receptor. May mediate intracellular signaling.



Western blot analysis of CD239 expression in HepG2 cell lysate.

**For Research Use Only. Not For Use In Diagnostic Procedures.**

[www.abways.com](http://www.abways.com)