

Product Datasheet

SKP2 Antibody



Catalog No: CY9668

Reactivity: Human

Isotype: Rabbit IgG

Applications: WB ICC/IF

www.abways.com

Information

UniProt ID: Q13309

All Names: FBL1; FBXL1; FLB1; p45; p45skp2; Skp2;

Form: Liquid

Storage instructions: Store at +4° C short term. Store at -20° C long term. Avoid freeze / thaw cycle.

Storage buffer: pH 7.4, 150mM NaCl, 0.02% sodium azide and 50% glycerol.

Purity: Affinity-chromatography

Immunogen: A synthesized peptide

Molecular Wt.: 42, 48kDa

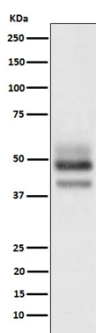
Application

WB 1:500~1:2000

ICC/IF 1:50~1:200

Background

Substrate recognition component of a SCF (SKP1-CUL1-F-box protein) E3 ubiquitin-protein ligase complex which mediates the ubiquitination and subsequent proteasomal degradation of target proteins involved in cell cycle progression, signal transduction and transcription.



Western blot analysis of SKP2 expression in HeLa cell lysate.

For Research Use Only. Not For Use In Diagnostic Procedures.

www.abways.com