

Product Datasheet

Phospho-KAP1 (S824) Antibody



Catalog No: CY9666

Reactivity: Human

Isotype: Rabbit IgG

Applications: WB IP

www.abways.com

Information

UniProt ID: Q13263

All Names: KAP 1; KRAB associated protein 1; KRIP1; RNF96; TF1B; TIF1 beta; TIF1B; Trim28; Tripartite motif containing 28;

Form: Liquid

Storage instructions: Store at +4° C short term. Store at -20° C long term. Avoid freeze / thaw cycle.

Storage buffer: pH 7.4, 150mM NaCl, 0.02% sodium azide and 50% glycerol.

Purity: Affinity-chromatography

Immunogen: A synthesized peptide

Molecular Wt.: 110kDa

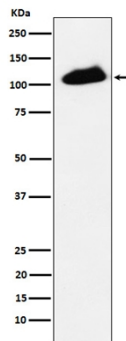
Application

WB 1:500~1:2000

IP 1:50

Background

Nuclear corepressor for KRAB domain-containing zinc finger proteins (KRAB-ZFPs). Mediates gene silencing by recruiting CHD3, a subunit of the nucleosome remodeling and deacetylation (NuRD) complex, and SETDB1 (which specifically methylates histone H3 at 'Lys-9' (H3K9me)) to the promoter regions of KRAB target genes.



Western blot analysis of Phospho-KAP1 (S824) expression in HeLa cell treated with etoposide.

For Research Use Only. Not For Use In Diagnostic Procedures.

www.abways.com