

## Product Datasheet

# CD16 Antibody



Catalog No: CY9545

Reactivity: Human Mouse Rat

Isotype: Rabbit IgG

Applications: WB ICC/IF FC

[www.abways.com](http://www.abways.com)

### Information

**UniProt ID:** P08637

**All Names:** IGFR3; CD16; CD16a; IMD20;

**Form:** Liquid

**Storage instructions:** Store at +4° C short term. Store at -20° C long term. Avoid freeze / thaw cycle.

**Storage buffer:** pH 7.4, 150mM NaCl, 0.02% sodium azide and 50% glycerol.

**Purity:** Affinity-chromatography

**Immunogen:** A synthesized peptide

**Molecular Wt.:** 42kDa

### Application

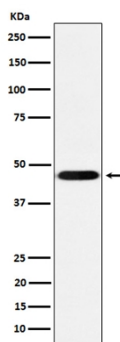
WB 1:500~1:2000

ICC/IF 1:50~1:200

FC 1:50

### Background

Receptor for the Fc region of IgG. Binds complexed or aggregated IgG and also monomeric IgG. Mediates antibody-dependent cellular cytotoxicity (ADCC) and other antibody-dependent responses, such as phagocytosis.



Western blot analysis of CD16 expression in THP-1 cell lysate.

**For Research Use Only. Not For Use In Diagnostic Procedures.**

[www.abways.com](http://www.abways.com)