

## Product Datasheet

# Phospho-PDHA1 (S293) Antibody



Catalog No: CY7247

Reactivity: Human Mouse Rat

Isotype: Rabbit IgG

Applications: WB IHC IP

[www.abways.com](http://www.abways.com)

### Information

**UniProt ID:** P08559

**All Names:** PDH; PDHA; PDHA1; PDHCE1A; PHE1A; Pyruvate Dehydrogenase (lipoamide) alpha 1; Pyruvate Dehydrogenase E1 alpha;

**Form:** Liquid

**Storage instructions:** Store at +4° C short term. Store at -20° C long term. Avoid freeze / thaw cycle.

**Storage buffer:** pH 7.4, 150mM NaCl, 0.02% sodium azide and 50% glycerol.

**Purity:** Affinity-chromatography

**Immunogen:** A synthesized peptide

**Molecular Wt.:** 40kDa

### Application

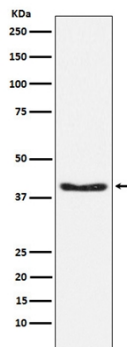
WB 1:500~1:2000

IHC 1:50~1:200

IP 1:50

### Background

The pyruvate dehydrogenase complex catalyzes the overall conversion of pyruvate to acetyl-CoA and CO<sub>2</sub>. It contains multiple copies of three enzymatic components: pyruvate dehydrogenase (E1), dihydrolipoamide acetyltransferase (E2) and lipoamide dehydrogenase (E3).



Western blot analysis of Phospho-PDHA1 (S293) expression in 293T cell lysate.

**For Research Use Only. Not For Use In Diagnostic Procedures.**

[www.abways.com](http://www.abways.com)