

Product Datasheet

HP1 gamma Antibody



Catalog No: CY7032

Reactivity: Human Mouse Rat

Isotype: Rabbit IgG

Applications: WB IHC IP FC

www.abways.com

Information

UniProt ID: Q13185

All Names: Chromobox protein homolog 3; HECH; Heterochromatin protein 1 homolog gamma; HP1 gamma; Modifier 2 protein; CBX3; HP1 gamma;

Form: Liquid

Storage instructions: Store at +4°C short term. Store at -20°C long term. Avoid freeze / thaw cycle.

Storage buffer: pH 7.4, 150mM NaCl, 0.02% sodium azide and 50% glycerol.

Purity: Affinity-chromatography

Immunogen: A synthesized peptide

Molecular Wt.: 24kDa

Application

WB 1:500~1:2000

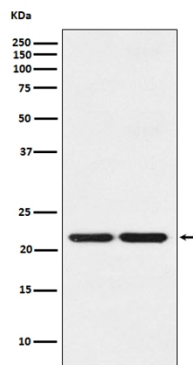
IHC 1:50~1:200

IP 1:50

FC 1:100

Background

Recognizes and binds histone H3 tails methylated at 'Lys-9', leading to epigenetic repression. May contribute to the association of the heterochromatin with the inner nuclear membrane through its interaction with lamin B receptor (LBR). Involved in the formation of functional kinetochore through interaction with MIS12 complex proteins.



Western blot analysis of HP1 gamma expression in (1) HeLa cell lysate; (2) NIH/3T3 cell lysate.

For Research Use Only. Not For Use In Diagnostic Procedures.

www.abways.com