

## Product Datasheet

# Phospho-Lamin A/C (Ser392) Antibody

Catalog No: CY6321

Reactivity: Human, Mouse, Rat

Isotype: Rabbit IgG

Applications: WB, IHC, ICC/IF



[www.abways.com](http://www.abways.com)

### Information

**UniProt ID:** P02545

**All Names:** 70 kDa lamin, LAMA, LMN1, LMNA

**Form:** Liquid

**Storage instructions:** Store at +4°C short term. Store at -20°C long term. Avoid freeze / thaw cycle.

**Storage buffer:** pH 7.4, 150mM NaCl, 0.02% sodium azide and 50% glycerol.

**Purity:** Affinity-chromatography

**Immunogen:** A synthesized peptide

**Molecular Wt.:** 74,65kDa

### Application

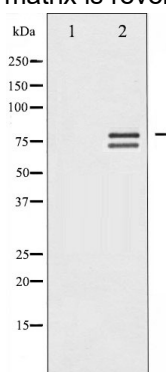
WB 1:500-1:2000

IHC 1:50-1:200

IF/ICC 1:100-1:500

### Background

The nuclear lamina consists of a two-dimensional matrix of proteins located next to the inner nuclear membrane. The lamin family of proteins make up the matrix and are highly conserved in evolution. During mitosis, the lamina matrix is reversibly disassembled.



Western blot analysis of Lamin A/C phosphorylation expression in HeLa whole cell lysates. The lane on the left is treated with the antigen-specific peptide.

**For Research Use Only. Not For Use In Diagnostic Procedures.**

[www.abways.com](http://www.abways.com)