

Product Datasheet

Tubulin gamma Antibody



Catalog No: CY5405

Reactivity: Human Mouse Rat Mk Ch Hamster Cow Dog Fish

Isotype: Rabbit IgG

Applications: WB IHC ICC/IF IP FC

www.abways.com

Information

UniProt ID: P23258

All Names: Gamma-1-tubulin; Gamma-tubulin complex component 1; GCP-1; TBG1; TUBG; TUBG1; TUBGCP1; Tubulin gamma-1 chain; tubulin, gamma 1; tubulin, gamma polypeptide,gamma tubulin;

Form: Liquid

Storage instructions: Store at +4°C short term. Store at -20°C long term. Avoid freeze / thaw cycle.

Storage buffer: pH 7.4, 150mM NaCl, 0.02% sodium azide and 50% glycerol.

Purity: Affinity-chromatography

Immunogen: A synthesized peptide

Molecular Wt.: 48 kDa

Application

WB 1:500~1:2000

IHC 1:50~1:200

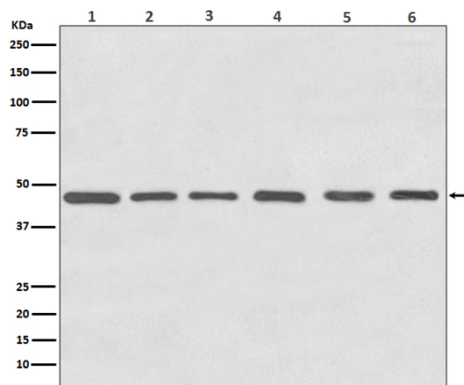
ICC/IF 1:50~1:200

IP 1:50

FC 1:50

Background

TUBG1 Tubulin is the major constituent of microtubules. Gamma tubulin is found at microtubule organizing centers (MTOC) such as the spindle poles or the centrosome. Pericentriolar matrix component that regulates alpha/beta tubulin minus-end nucleation, centrosome duplication and spindle formation. Interacts with GCP2 and GCP3. Interacts with B9D2. Interacts with CDK5RAP2;



Western blot analysis of Tubulin gamma expression in (1) HeLa cell lysate; (2) NIH 3T3 cell lysate; (3) C6 cell lysate; (4) Zebrafish lysates; (5) COS-1 cell lysate; (6) MDCK cell lysate.

For Research Use Only. Not For Use In Diagnostic Procedures.

www.abways.com