

Product Datasheet

Lamin A/C Antibody



Catalog No: CY5222

Reactivity: Human

Isotype: Rabbit IgG

Applications: WB IHC ICC/IF IP FC

www.abways.com

Information

UniProt ID: P02545

All Names: 70 kDa lamin;LAMA;;LMN1;LMN C; lamin A/C ; Lamin; HGPS; EMD2;

Form: Liquid

Storage instructions: Store at +4°C short term. Store at -20°C long term. Avoid freeze / thaw cycle.

Storage buffer: pH 7.4, 150mM NaCl, 0.02% sodium azide and 50% glycerol.

Purity: Affinity-chromatography

Immunogen: A synthesized peptide derived from human Lamin A/C

Molecular Wt.: 63,74 kDa

Application

WB 1:3000~1:10000

IHC 1:50~1:200

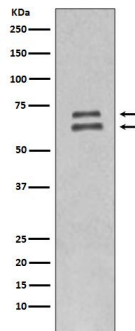
ICC/IF 1:50~1:200

IP 1:50

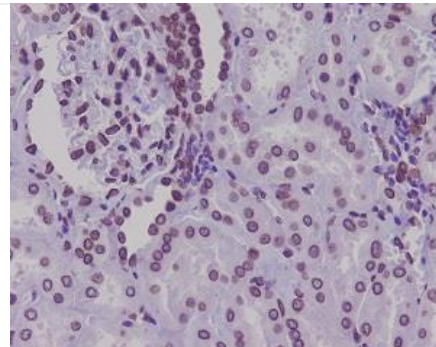
FC 1:50

Background

Play an important role in nuclear assembly, chromatin organization, nuclear membrane and telomere dynamics. Prelamin-A/C can accelerate smooth muscle cell senescence. It acts to disrupt mitosis and induce DNA damage in vascular smooth muscle cells (VSMCs), leading to mitotic failure, genomic instability, and premature senescence.



Western blot analysis of Lamin A/C expression in HeLa whole cell lysates.



Immunohistochemical analysis of paraffin-embedded human kidney, using Lamin A/C Antibody.

For Research Use Only. Not For Use In Diagnostic Procedures.

www.abways.com