

## Product Datasheet

# HP1 $\gamma$ Antibody

Catalog No: AY0671

Reactivity: Human, Mouse, Rat

Isotype: Rabbit IgG

Applications: WB, IHC, ELISA



[www.abways.com](http://www.abways.com)

### Information

**UniProt ID:** Q13185

**All Names:** chromobox 3; chromobox 3 (HP1 gamma); HECH; heterochromatin protein 1 gamma; heterochromatin protein HP1 gamma; heterochromatin-like protein 1; HP1 gamma; HP1 gamma homolog; HP1-GAMMA; HP1Hs-gamma; modifier 2 protein

**Form:** Liquid

**Storage instructions:** Store at +4°C short term. Store at -20°C long term. Avoid freeze / thaw cycle.

**Storage buffer:** pH 7.4, 150mM NaCl, 0.02% sodium azide and 50% glycerol.

**Purity:** Affinity-chromatography

**Immunogen:** A synthesized peptide

**Molecular Wt.:**

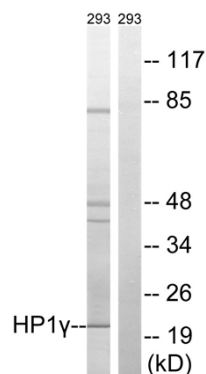
### Application

WB: 1:500~1:3000

IHC: 1:50~1:100

ELISA: 1:40000

### Background



Western blot analysis of extracts from 293 cells, using HP1 $\gamma$  antibody.

**For Research Use Only. Not For Use In Diagnostic Procedures.**

[www.abways.com](http://www.abways.com)