

Product Datasheet

Lamin A (Cleaved-Asp230) Antibody



Catalog No: AY0216

Reactivity: Human:D230,Mouse:D230,Rat:D229

Isotype: Rabbit IgG

Applications: WB,IHC

www.abways.com

Information

UniProt ID: P02545

All Names: 70 kDa lamin, LAMA, LMN1, LMNA

Form: Liquid

Storage instructions: Store at +4°C short term. Store at -20°C long term. Avoid freeze / thaw cycle.

Storage buffer: pH 7.4, 150mM NaCl, 0.02% sodium azide and 50% glycerol.

Purity: Affinity-chromatography

Immunogen: A synthesized peptide

Molecular Wt.:

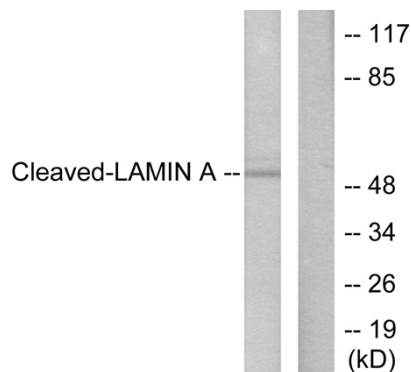
Application

WB: 1:500~1:3000

IHC: 1:50~1:100

ELISA: 1:40000

Background



Western blot analysis of extracts from NIH/3T3 cells, treated with Etoposide (25 μ M, 60mins), using Lamin A (Cleaved-Asp230) Antibody (#L0117).

For Research Use Only. Not For Use In Diagnostic Procedures.

www.abways.com