

Product Datasheet

gamma Tubulin (6A10) Mouse mAb

Catalog No: AB3596

Reactivity: Human,Mouse,Rat

Isotype: Mouse IgG1

Applications: WB,IHC



www.abways.com

Information

UniProt ID: P23258

All Names: TUBG1; TUBG; Tubulin gamma-1 chain; Gamma-1-tubulin; Gamma-tubulin complex component 1; GCP-1

Form: Liquid

Storage instructions: Store at +4°C short term. Store at -20°C long term. Avoid freeze / thaw cycle.

Storage buffer: pH 7.4, 150mM NaCl, 0.02% sodium azide and 50% glycerol.

Purity: Affinity-chromatography

Immunogen: A synthesized peptide

Molecular Wt.: 50kDa

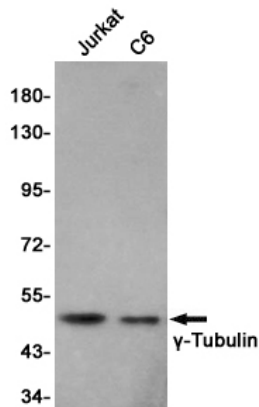
Application

WB: 1/500-1/1000

IHC: 1/50-1/100

Background

Swiss-Prot Acc.P23258.Tubulin is the major constituent of microtubules. The gamma chain is found at microtubule organizing centers (MTOC) such as the spindle poles or the centrosome. Pericentriolar matrix component that regulates alpha/beta chain minus-end nucleation, centrosome duplication and spindle formation.RegionsFeature keyPosition(s)Description



Western blot analysis of gamma Tubulin (6A10) in Jurkat,C6 lysates using gamma Tubulin (6A10) antibody.

For Research Use Only. Not For Use In Diagnostic Procedures.

www.abways.com