

## Product Datasheet

# gamma Tubulin (8H4) Mouse mAb

Catalog No: AB3588

Reactivity: Human

Isotype: Mouse IgG1

Applications: IHC



[www.abways.com](http://www.abways.com)

### Information

**UniProt ID:** P23258

**All Names:** TUBG1; TUBG; Tubulin gamma-1 chain; Gamma-1-tubulin; Gamma-tubulin complex component 1; GCP-1

**Form:** Liquid

**Storage instructions:** Store at +4°C short term. Store at -20°C long term. Avoid freeze / thaw cycle.

**Storage buffer:** pH 7.4, 150mM NaCl, 0.02% sodium azide and 50% glycerol.

**Purity:** Affinity-chromatography

**Immunogen:** A synthesized peptide

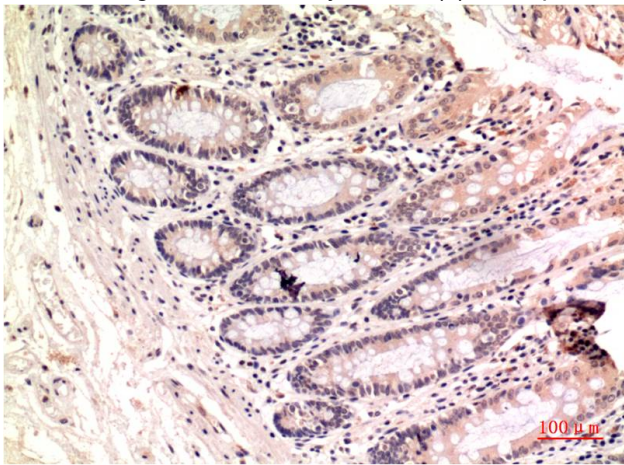
**Molecular Wt.:** 50kDa

### Application

IHC: 1/50-1/100

### Background

Swiss-Prot Acc.P23258.Tubulin is the major constituent of microtubules. The gamma chain is found at microtubule organizing centers (MTOC) such as the spindle poles or the centrosome. Pericentriolar matrix component that regulates alpha/beta chain minus-end nucleation, centrosome duplication and spindle formation. RegionsFeature keyPosition(s)Description



Immunohistochemistry analysis of paraffinembedded Human Colon Carcinoma Tissue using gamma Tubulin (8H4) antibody.

**For Research Use Only. Not For Use In Diagnostic Procedures.**

[www.abways.com](http://www.abways.com)