

Product Datasheet

PPP1A/PPP1CA Mouse mAb



Catalog No: AB3473

Reactivity: Human,Mouse,Monkey,Rat

Isotype: Mouse IgG1

Applications: WB,ICC/IF

www.abways.com

Information

UniProt ID: P62136

All Names: Alpha isoform serine threonine protein phosphatase PP1alpha 1 catalytic subunit; Catalytic subunit; PP1A; PP1A_HUMAN; PP1alpha; PP2C ALPHA; PP2CA; Ppp1ca; Protein Phosphatase 2C Alpha Isoform;

Form: Liquid

Storage instructions: Store at +4°C short term. Store at -20°C long term. Avoid freeze / thaw cycle.

Storage buffer: pH 7.4, 150mM NaCl, 0.02% sodium azide and 50% glycerol.

Purity: Affinity-chromatography

Immunogen: A synthesized peptide

Molecular Wt.: 37kDa

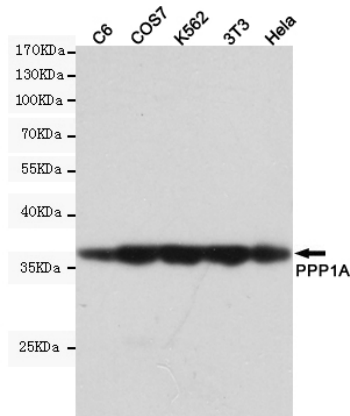
Application

WB: 1/500-1/1000

ICC/IF: 1/50-1/200

Background

Swiss-Prot Acc.P62136.



Western blot detection of PPP1A in C6,COS7,K562,3T3 and HeLa cell lysates using PPP1A mouse mAb (1:1000 diluted).Predicted band size:37KDa.Observed band size:37KDa.

For Research Use Only. Not For Use In Diagnostic Procedures.

www.abways.com