

## Product Datasheet

# Pyruvate Dehydrogenase E1-alpha subunit Mouse mAb



Catalog No: AB3471

Reactivity: Human,Mouse,Monkey,Rat

www.abways.com

Isotype: Mouse IgG1

Applications: WB,ICC/IF

### Information

**UniProt ID:** P08559

**All Names:** mitochondrial; ODP4\_HUMAN; PDH; PDHA; PDHA1; PDHCE1A; PDHE1 A type I; PDHE1-A type I; PHE1A; Pyruvate Dehydrogenase (lipoamide) alpha 1; Pyruvate dehydrogenase complex; E1 alpha polypeptide 1;

**Form:** Liquid

**Storage instructions:** Store at +4°C short term. Store at -20°C long term. Avoid freeze / thaw cycle.

**Storage buffer:** pH 7.4, 150mM NaCl, 0.02% sodium azide and 50% glycerol.

**Purity:** Affinity-chromatography

**Immunogen:** A synthesized peptide

**Molecular Wt.:** 43kDa

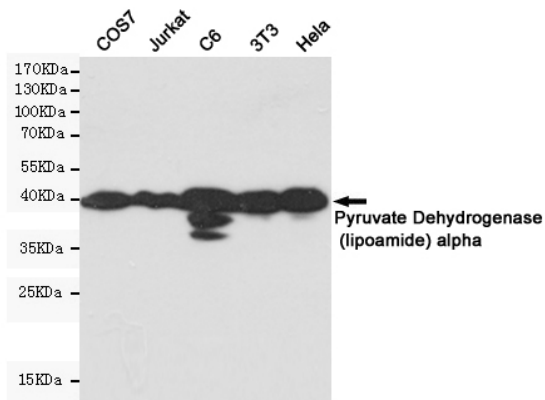
### Application

WB: 1/500-1/1000

ICC/IF: 1/50-1/200

### Background

Swiss-Prot Acc.P08559.



Western blot detection of pyruvate dehydrogenase (lipoamide) alpha 1 in COS7, Jurkat, C6, 3T3 and HeLa cell lysates using pyruvate dehydrogenase (lipoamide) alpha 1 mouse mAb (1:1000 diluted). Predicted band size: 43kDa. Observed band size: 43kDa.

**For Research Use Only. Not For Use In Diagnostic Procedures.**

www.abways.com