

Product Datasheet

Lamin A/C Mouse mAb



Catalog No: AB3304

Reactivity: Human

Isotype: Mouse IgG1

Applications: WB, ICC/IF

www.abways.com

Information

UniProt ID: P02545

All Names: 70 kDa laminin;LAMA,;LMN1;LMN C; lamin A/C; Lamin; HGPS; EMD2;

Form: Liquid

Storage instructions: Store at +4°C short term. Store at -20°C long term. Avoid freeze / thaw cycle.

Storage buffer: pH 7.4, 150mM NaCl, 0.02% sodium azide and 50% glycerol.

Purity: Affinity-chromatography

Immunogen: A synthesized peptide

Molecular Wt.: 74/63KDa

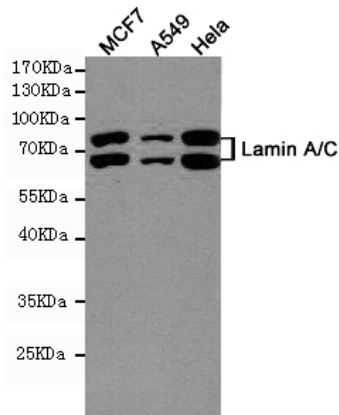
Application

WB 1:1000

ICC/IF 1:200

Background

Lamins are components of the nuclear lamina, a fibrous layer on the nucleoplasmic side of the inner nuclear membrane, which is thought to provide a framework for the nuclear envelope and may also interact with chromatin. Lamin A and C are present in equal amounts in the lamina of mammals. Plays an important role in nuclear assembly, chromatin organization, nuclear membrane and telomere dynamics.



Western blot detection of Lamin A/C in MCF7, A549 and HeLa cell lysates using Lamin A/C mouse mAb (1:1000 diluted). Predicted band size: 74,63KDa. Observed band size: 74,63KDa.

For Research Use Only. Not For Use In Diagnostic Procedures.

www.abways.com