

Product Datasheet

SMC1A(N-term) Mouse mAb



Catalog No: AB3128

Reactivity: Human

Isotype: Mouse IgG1

Applications: WB,IHC,FC

www.abways.com

Information

UniProt ID: Q14683

All Names: Chromosome segregation protein SmcB; DXS423E; KIAA0178; SB1.8/DXS423E protein; SM1A; SMC1A; SMC1L1; SMC1alpha protein; Structural maintenance of chromosome 1-like 1 protein;

Form: Liquid

Storage instructions: Store at +4°C short term. Store at -20°C long term. Avoid freeze / thaw cycle.

Storage buffer: pH 7.4, 150mM NaCl, 0.02% sodium azide and 50% glycerol.

Purity: Affinity-chromatography

Immunogen: A synthesized peptide

Molecular Wt.: 143KDa

Application

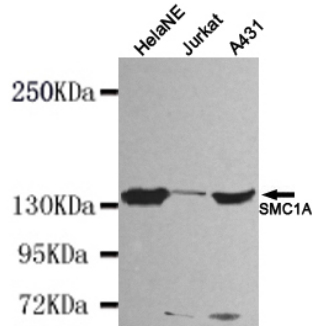
WB 1:1000

IHC 1:500

FC 1:100

Background

Involved in chromosome cohesion during cell cycle and in DNA repair. Central component of cohesin complex. The cohesin complex is required for the cohesion of sister chromatids after DNA replication. The cohesin complex apparently forms a large proteinaceous ring within which sister chromatids can be trapped. At anaphase, the complex is cleaved and dissociates from chromatin, allowing sister chromatids to segregate.



Western blot detection of SMC1A(N-terminus) in HeLaNE, Jurkat and A431 cell lysates using SMC1A (N-terminus) mouse mAb (1:1000 diluted). Predicted band size: 143KDa. Observed band size: 143KDa.

For Research Use Only. Not For Use In Diagnostic Procedures.

www.abways.com