

## Product Datasheet

# KLF4 Mouse mAb

Catalog No: AB3116

Reactivity: /

Isotype: Mouse IgG2b

Applications: WB



www.abways.com

### Information

**UniProt ID:** O43474

**All Names:** Krueppel-like factor 4; Epithelial zinc finger protein EZF; Gut-enriched krueppel-like factor; KLF4; EZF; GKLF;

**Form:** Liquid

**Storage instructions:** Store at +4°C short term. Store at -20°C long term. Avoid freeze / thaw cycle.

**Storage buffer:** pH 7.4, 150mM NaCl, 0.02% sodium azide and 50% glycerol.

**Purity:** Affinity-chromatography

**Immunogen:** A synthesized peptide

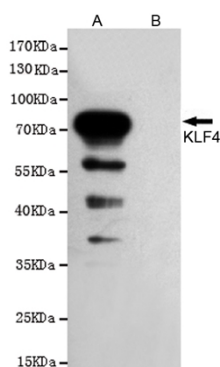
**Molecular Wt.:** 55/65KDa

### Application

WB 1:1000

### Background

Plays an important role in maintaining embryonic stem cells, and in preventing their differentiation. Required for establishing the barrier function of the skin and for postnatal maturation and maintenance of the ocular surface. Involved in the differentiation of epithelial cells and may also function in skeletal and kidney development. Contributes to the down-regulation of p53/TP53 transcription.



Western blot analysis of extracts from CHO-K1 cells, transfected with pcDNA3.1-Hygro(+)-mKLF4-Flag construct (A) or transfected with pDNA3.1-Hygro(+)-Flag vector (B), using KLF4 mouse mAb (1:1000 diluted). Predicted band size: 55/65KDa. Observed band size: 55/

**For Research Use Only. Not For Use In Diagnostic Procedures.**

www.abways.com