

Product Datasheet

Eg5 Mouse mAb

Catalog No: AB3108

Reactivity: Human

Isotype: Mouse IgG1

Applications: WB,ICC/IF,IP



www.abways.com

Information

UniProt ID: P52732

All Names: EG5; HKSP; Kinesin family member 11; Kinesin like protein 1; Kinesin-like protein KIF11; Kinesin-like spindle protein HKSP;

KNSL1; MCLMR; TR-interacting protein 5; TRIP5;

Form: Liquid

Storage instructions: Store at +4°C short term. Store at -20°C long term. Avoid freeze / thaw cycle.

Storage buffer: pH 7.4, 150mM NaCl, 0.02% sodium azide and 50% glycerol.

Purity: Affinity-chromatography

Immunogen: A synthesized peptide

Molecular Wt.: 130KDa

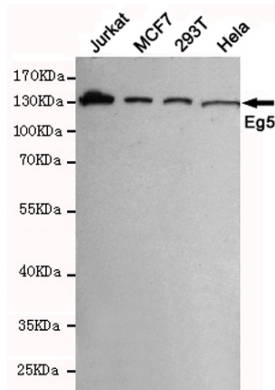
Application

WB 1:1000

ICC/IF 1:200 IP

Background

Motor protein required for establishing a bipolar spindle. Blocking of KIF11 prevents centrosome migration and arrest cells in mitosis with monoastal microtubule arrays.



Western blot detection of Eg5 in MCF7,293T,Jurkat and HeLa cell lysates using Eg5 mouse mAb (1:1000 diluted).Predicted band size:130KDa.Observed band size:130KDa.

For Research Use Only. Not For Use In Diagnostic Procedures.

www.abways.com