

Product Datasheet

beta Actin Mouse Monoclonal Antibody



Catalog No: AB0061 Reactivity: Human , Mouse , Monkey , Goat , Rat , Hamster ,
Saccharomyces cerevisiae , Arabidopsis , Pichia
pastoris , Rabbit , Zebrafish , Drosophila , Leaf of
Rice , Fruit of Cucumber , Chlamydomonas
Reinhardtii

www.abways.com

Isotype: Mouse IgG2b Applications: WB

Information

UniProt ID: P60709

All Names: ACTIN; ACTB; BETA-ACTIN; beta actin; actin beta;

Form: Liquid

Storage instructions: Store at +4°C short term. Store at -20°C long term. Avoid freeze / thaw cycle.

Storage buffer: pH 7.4, 150mM NaCl, 0.02% sodium azide and 50% glycerol.

Purity: Affinity-chromatography

Immunogen: A synthesized peptide

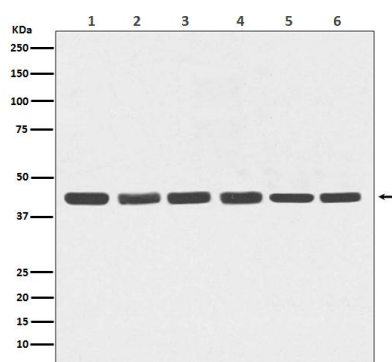
Molecular Wt.: 42kDa

Application

WB 1:3000~1:10000

Background

beta-Actin is one of six different actin isoforms that have been identified. The actin molecules found in cells of various species and tissues tend to be very similar in their immunological and physical properties. Therefore, Antibodies against beta-Actin are useful as loading controls for Western Blotting. However it should be noted that levels of beta-Actin may not be stable in certain cells. For example, expression of beta-Actin in adipose tissue is very low and therefore it should not be used as loading control for these tissues.



Western blot analysis of beta Actin expression in (1) Hela; (2) Human fetal kidney lysate; (3) 3T3 cell lysate; (4) PC-12 cell lysate; (5) COS-1 cell lysate; (6) Goat muscle lysate.

For Research Use Only. Not For Use In Diagnostic Procedures.

www.abways.com