

## Product Datasheet

# beta Actin Mouse Monoclonal Antibody



Catalog No: AB0011

Reactivity: H M R Mk Dg Ch Pg Rabbit

Isotype: Mouse IgG1

Applications: WB IHC IF/ICC

[www.abways.com](http://www.abways.com)

### Information

**UniProt ID:** P60709

**All Names:** ACTB; actin, beta; Actin, cytoplasmic 1; Actin, cytoplasmic 1, N-terminally processed; beta actin; beta cytoskeletal actin; Beta-actin; PS1TP5-binding protein 1; PS1TP5BP1

**Form:** Liquid

**Storage instructions:** Store at +4°C short term. Store at -20°C long term. Avoid freeze / thaw cycle.

**Storage buffer:** pH 7.4, 150mM NaCl, 0.02% sodium azide and 50% glycerol.

**Purity:** Affinity-chromatography

**Immunogen:** A synthesized peptide

**Molecular Wt.:** 42 kDa

### Application

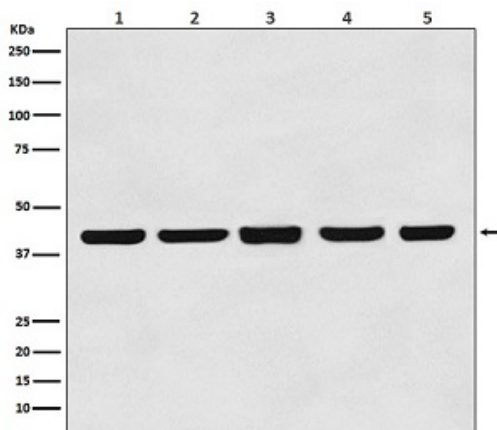
WB: 1:3000~1:10000

IHC: 1:100~1:200

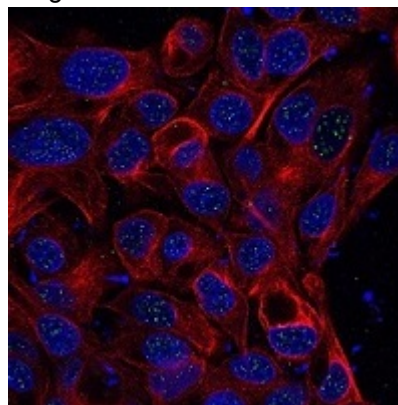
ICC/IF: 1:100~1:200

### Background

beta Actin is one of six different actin isoforms that have been identified. The actin molecules found in cells of various species and tissues tend to be very similar in their immunological and physical properties. Therefore, Antibodies against beta-Actin are useful as loading controls for Western Blotting. However it should be noted that levels of beta-Actin may not be stable in certain cells. For example, expression of beta-Actin in adipose tissue is very low and therefore it should not be used as loading control for these tissues.



Western blot analysis of (1) Hela cell lysate; (2) Rat brain lysate; (3) Mouse brain lysate; (4) Chicken lung lysate; (5) Rabbit testis lysate with beta Actin mouse mAb.



Immunofluorescent analysis of HepG2 cells, using beta Actin mAb.

**For Research Use Only. Not For Use In Diagnostic Procedures.**

[www.abways.com](http://www.abways.com)